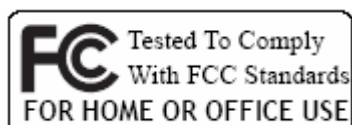


**IEEE 802.11b/g**

# Wireless LAN USB Adapter

## QUICK START GUIDE

VERSION 2.0  
2007/04/24



1

## BOX CONTENTS



Wireless LAN Adapter



Quick Start Guide



Driver CD

2

## INSTALL DRIVER / UTILITY

The installation & driver CD will automatically activate the autorun installation program after you insert the disk into your CD drive.

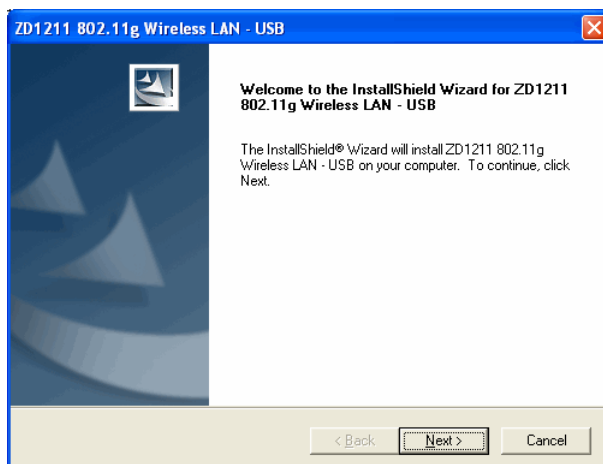
### Step 1 :

Insert the installation & driver CD into your CD-ROM.



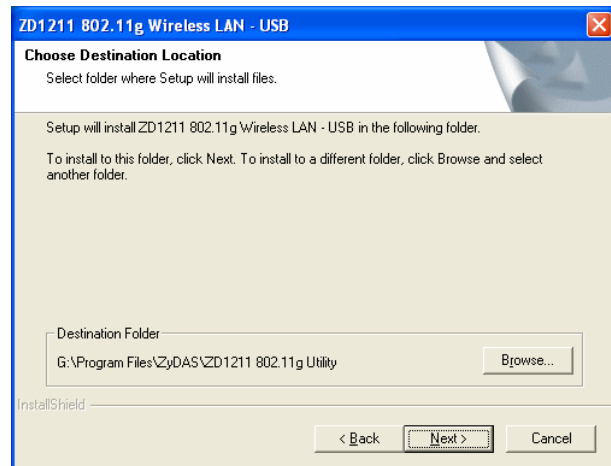
### Step 2 :

Click **Next** to continue.



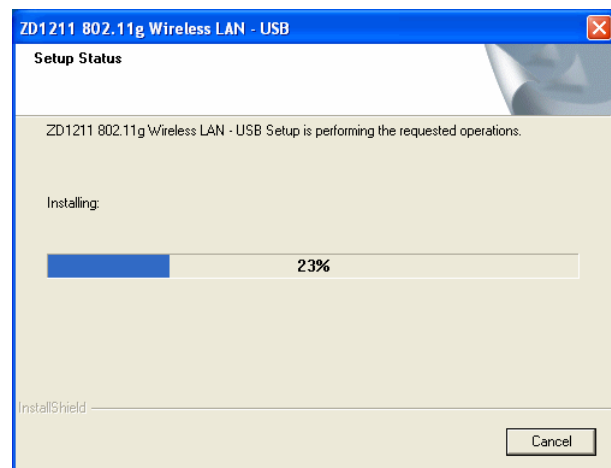
### Step 3 :

Click **Next** to install at the designated folder. Or, click "Browse" to select different folder.



### Step 4 :

Start copying files until it finish the installation.



### Step 5 :

Click **Finish** to complete installation.



### Step 6 :

After finished install driver and utility on your system, plug the USB adapter into the USB port of your PC. Windows XP/2000 will automatically detect the USB Adapter.

### 3

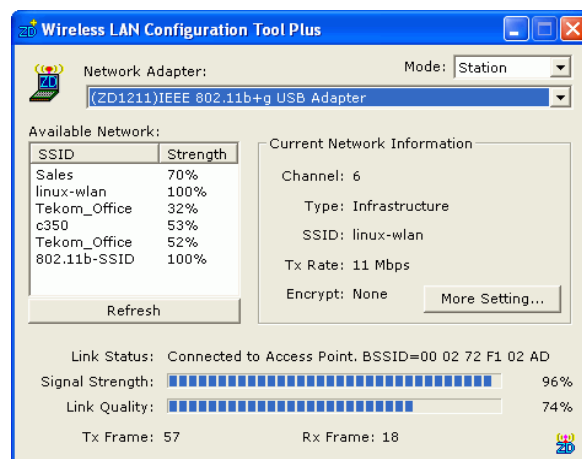
## WIRELESS NETWORK CONFIGURATION

WLAN USB Adapter uses its own management software. All functions controlled by users are provided by this application. When you insert the WLAN USB Adapter into the USB port of PC, a new icon should appear in the Windows System Tray automatically.



If the icon is in red, it means that WLAN USB Adapter configuration is invalid or incomplete. Double click on that icon and the configuration window will pop up as shown below. It shows the SSID of available network. Once a network is chosen, the signal strength and link quality are displayed.

The Link Quality and Signal Strength bar chart is only active when the node is in Infrastructure Mode. The bar graph displays the quality and strength of the link between the node and its Access Point. Link Quality is a measurement of receiving and transmitting performances over the radio.



Tx/Rx Frame displays the instantaneous wireless Transmit and Receive throughput in bytes per second. These values are updated every two seconds.

The Configuration Tool contains several fields where operating parameters of the driver can be viewed or changed. Changes to any of the parameters in this panel can be applied to the driver without a need to restart the computer



Please refer to User's Manual in CD for more detail.

# 4

## INSTALL VISTA DRIVER

1. The installation & driver CD will automatically activate the autorun installation program after you insert the disk into your CD drive. Please refer to page 2 "INSTALL DRIVER/UTILITY"
2. To install manually:

Plug your USB dongle into USB interface, windows Vista will search for compatible driver to install.

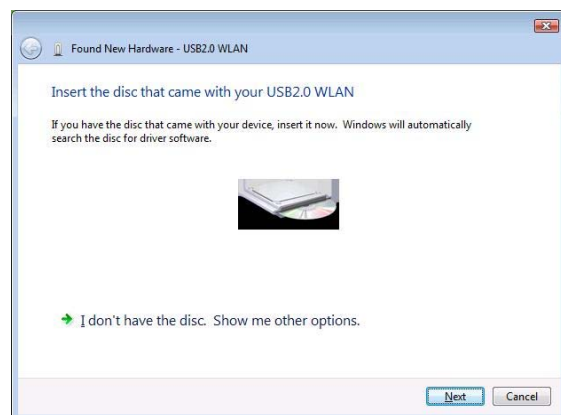
### Step 1 :

Select "Locate and install the driver software", Windows will guide you through the process of installing driver software for your device.



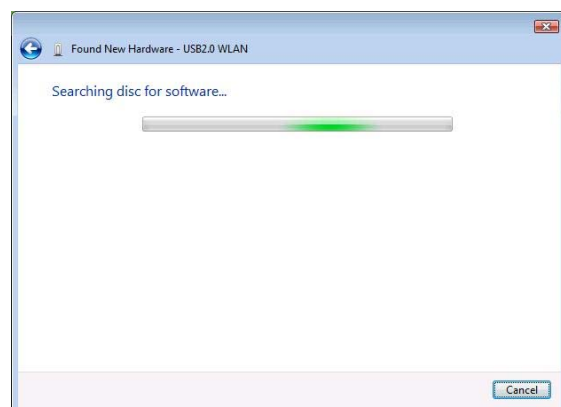
### Step 2 :

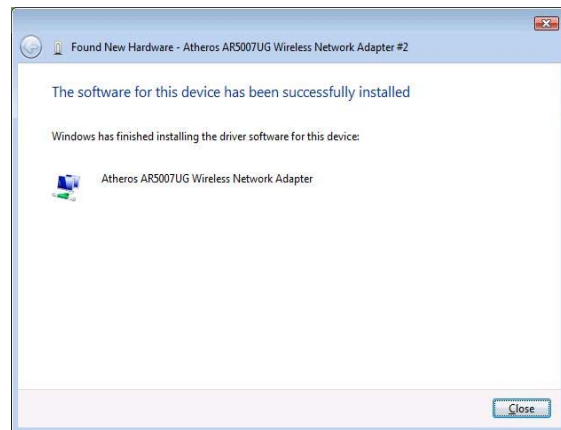
Insert the installation disc into the CD-ROM and click "next" to continue installation.



### Step 3 :

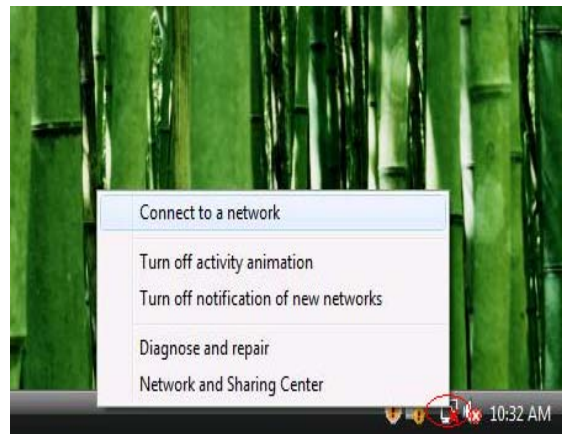
Windows Vista search for the software and it will be installed successfully.





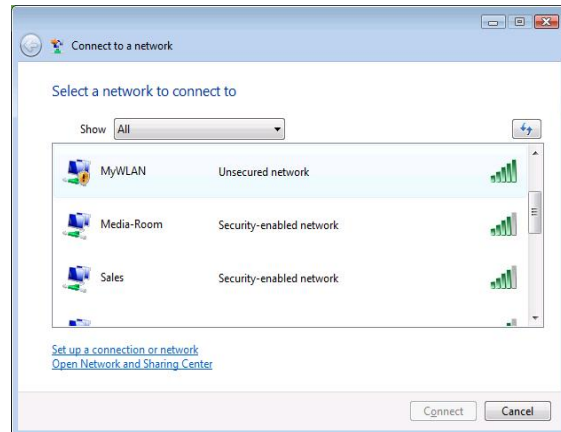
#### Step 4 :

After installation, right click the network icon on the Windows Vista System Tray, and click "Connect to a network".



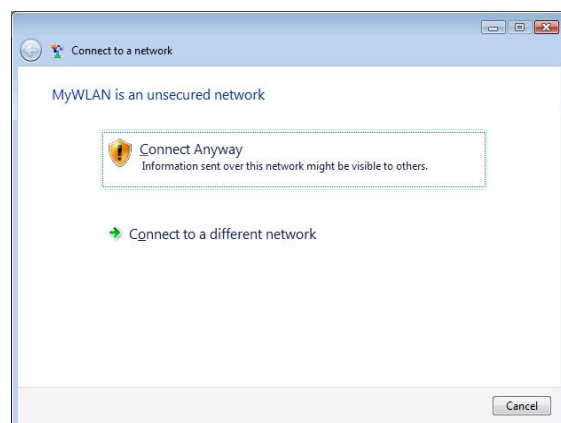
#### Step 5 :

Select a network to connect to and click "Connect".



#### Step 6 :

Click "Connect Anyway" if the network is an unsecured network.



**Step 7:**

USB Dongle successfully connected to network, Click "Close"

