

ZyDAS WLAN Solution

ZD1211MacUSB_install User Guide

Version 0.5

ZyDAS

ZyDAS Technology Corporation

Amendment History

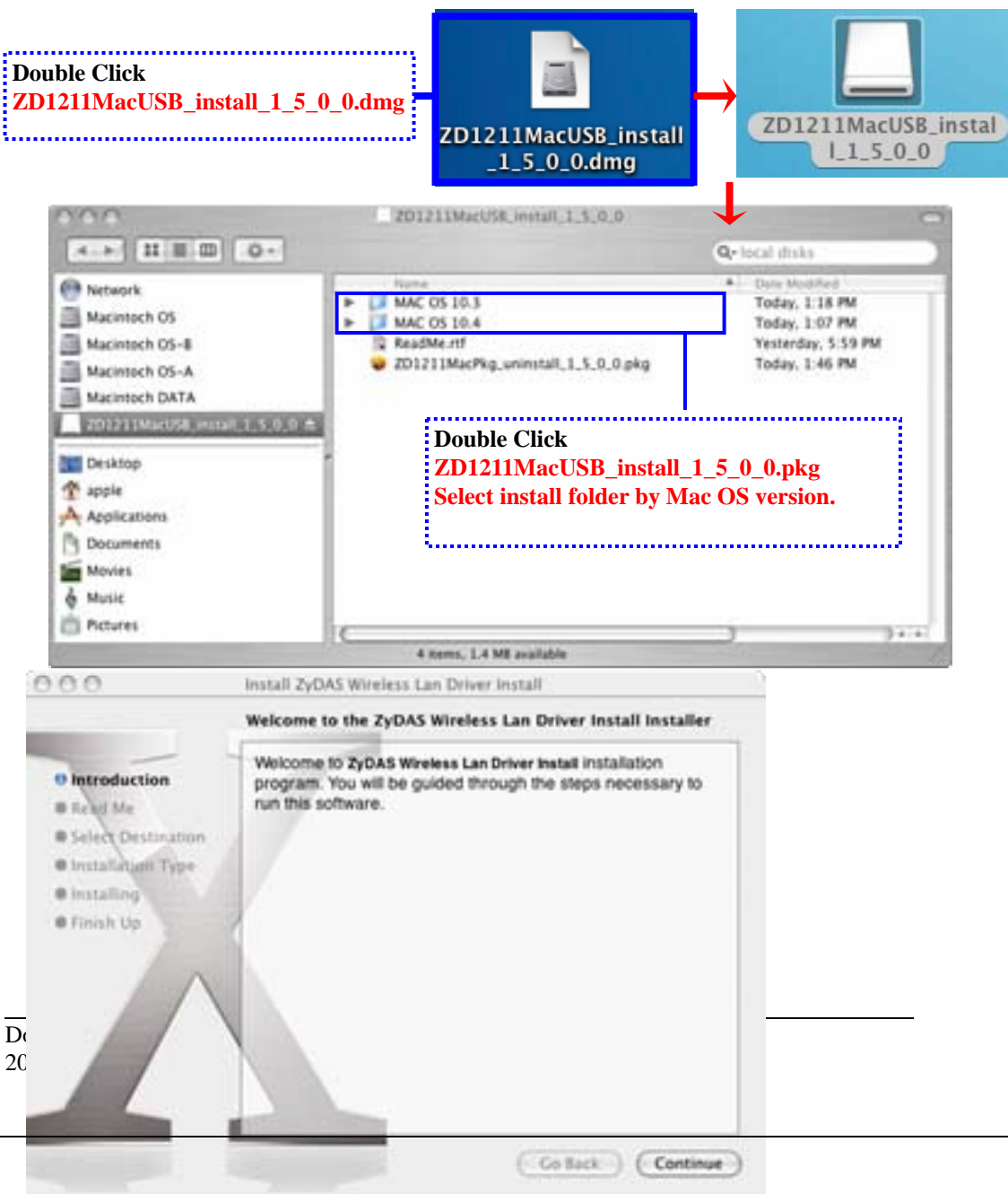
Release Date	Release Version	Release Person	Release Description
2005/3/16	0.1	Yjsung	Initial version.
2006/6/17	0.4	Yjsung	Add user guide for WPA function.
2006/11/27	0.5	James Hsiao	Add one using restrictions of operation.

ZDWlan_1211 User Guide	3
1. Install ZD1211 driver and ZDWlan Utility.....	3
2. Use ZDWlan Utility.....	8
3. UnInstall ZD1211 driver and ZDWlan Utility	15

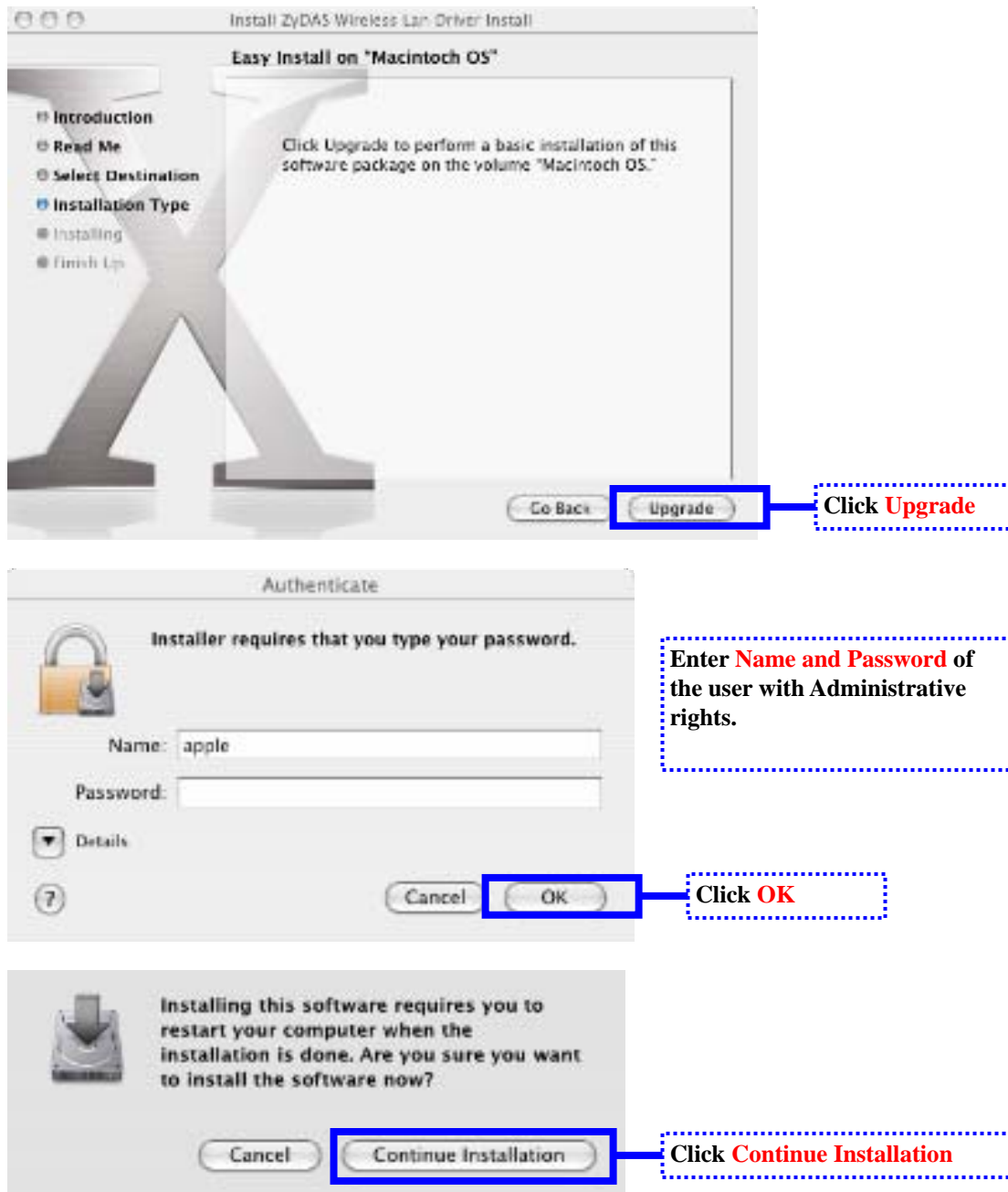
ZDWlan_1211 User Guide

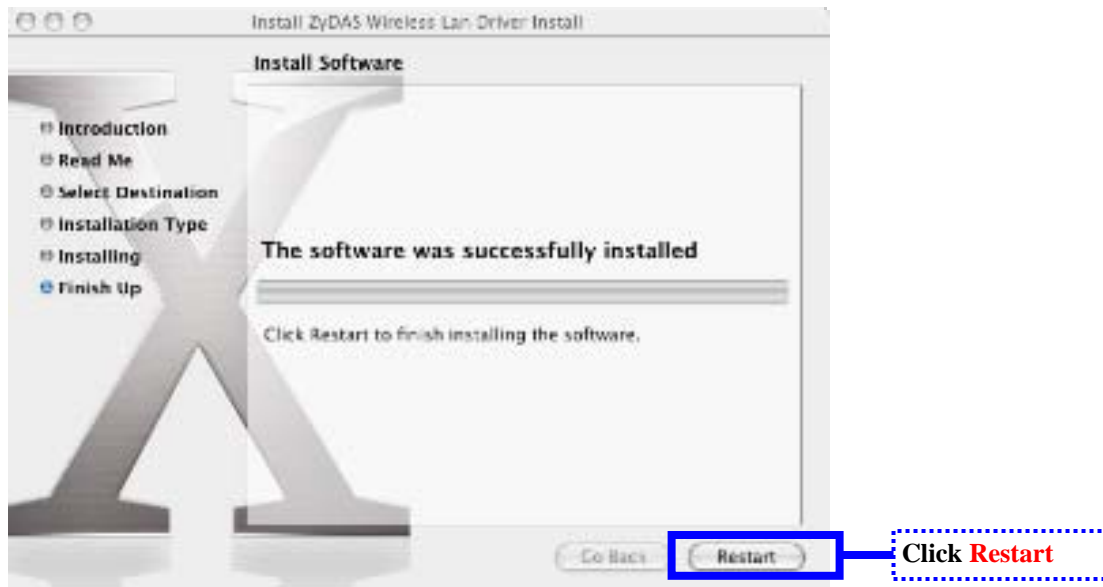
- **Important Note:**
- 1. Before installing: Please do this installation with an **Admin-privileged** user account. If you run with a standard user account, the wireless configuration utility can't work properly after you finish installing.
- 2. Before uninstalling: Please remove the wireless card and quit WLAN utility.

1. Install ZD1211 driver and ZDWlan Utility



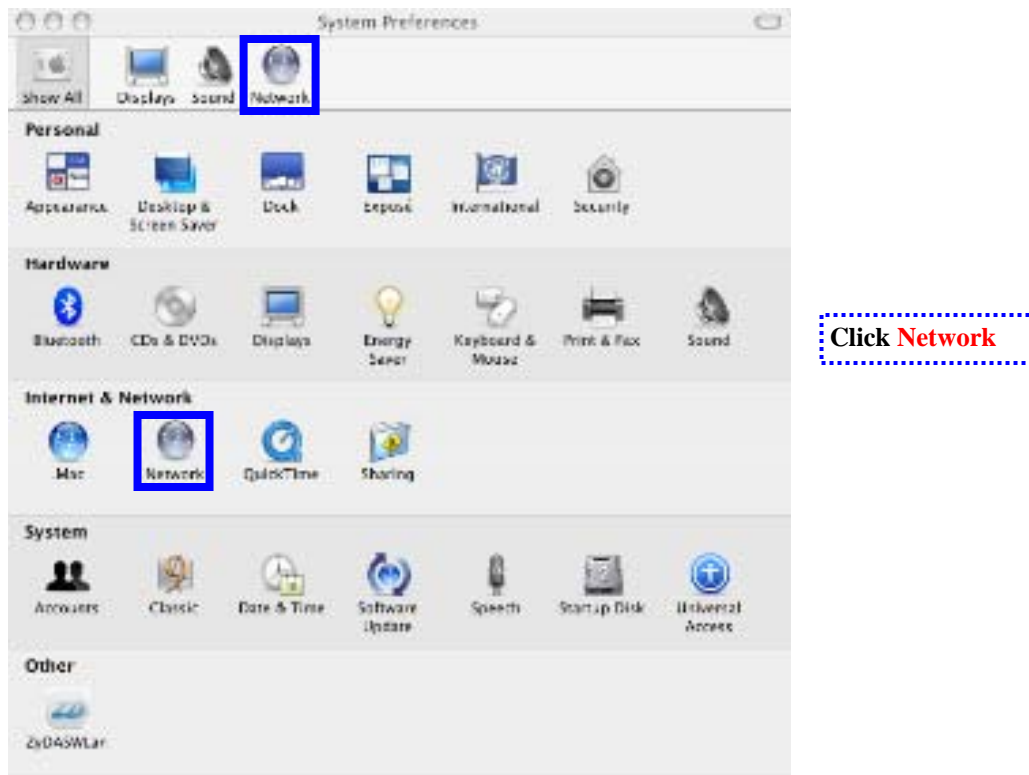
 Click **Continue**Click **Continue**Select a Destination
VolumeClick **Continue**

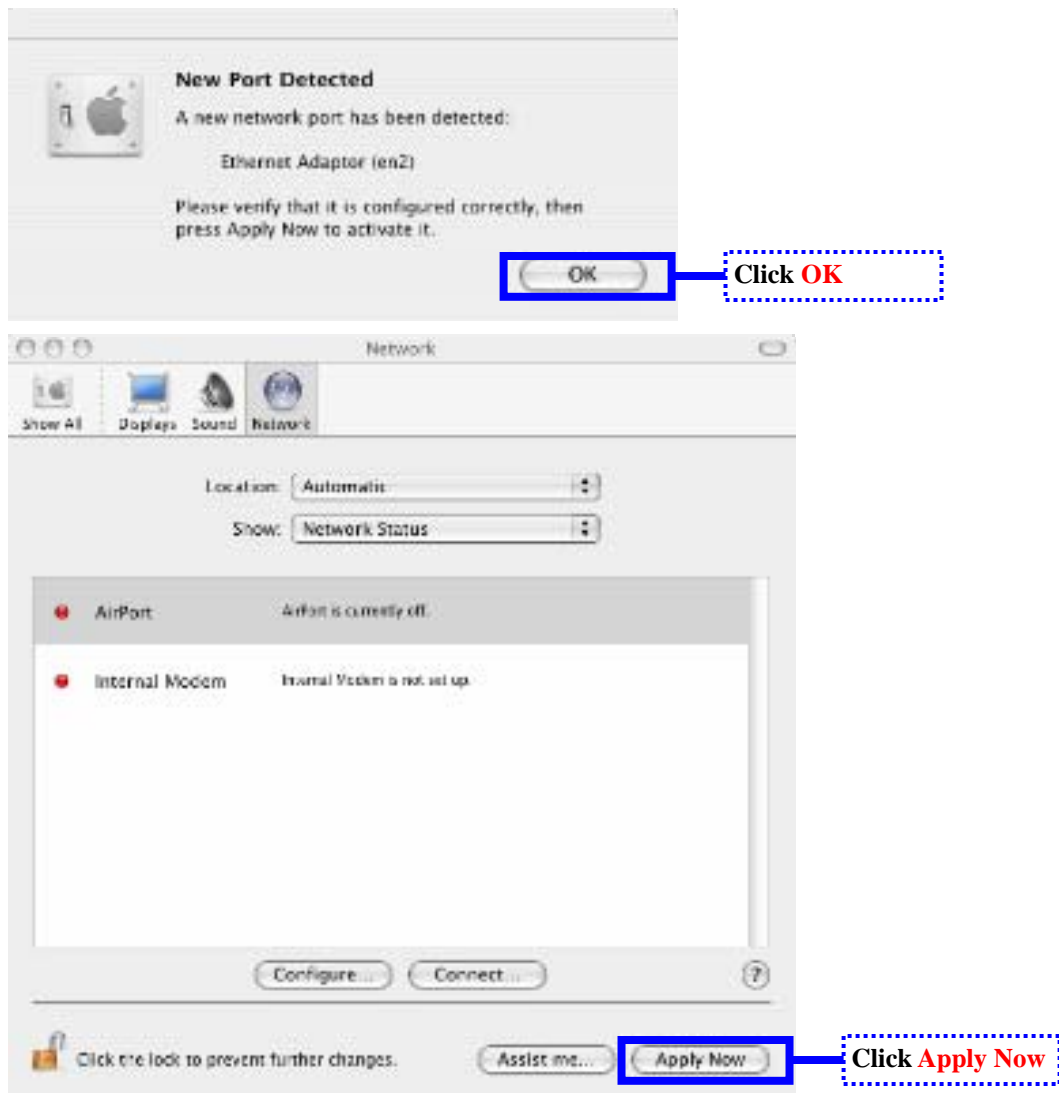




Now the Driver and Utility Installation is Complete! Restart the computer.

NOTE: If this the first time you run this Wireless card after installaion, please enable the new network interface in the **Network Control Panel in System Preferences**.
It is essential to follow the steps in below, before first launch of ZyDASWLAN utility.





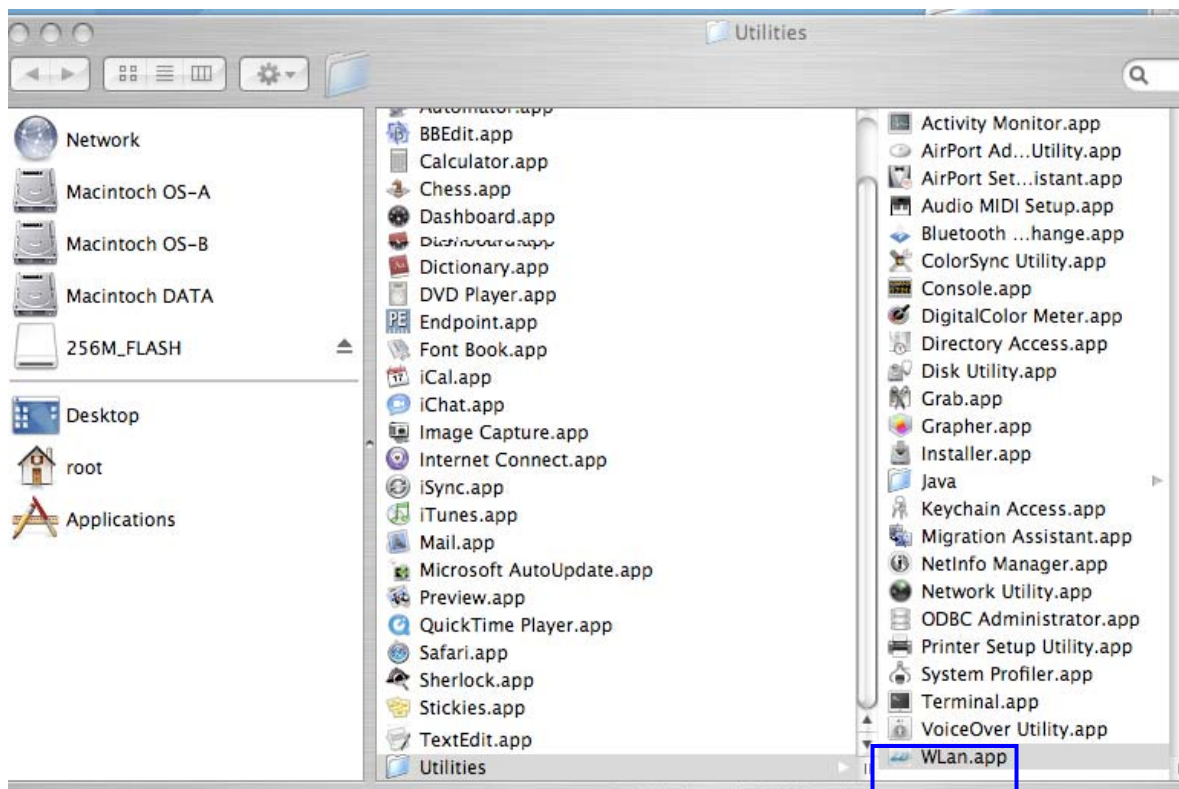
Now It's ready to use Wireless.

2. Using Wlan.app utility

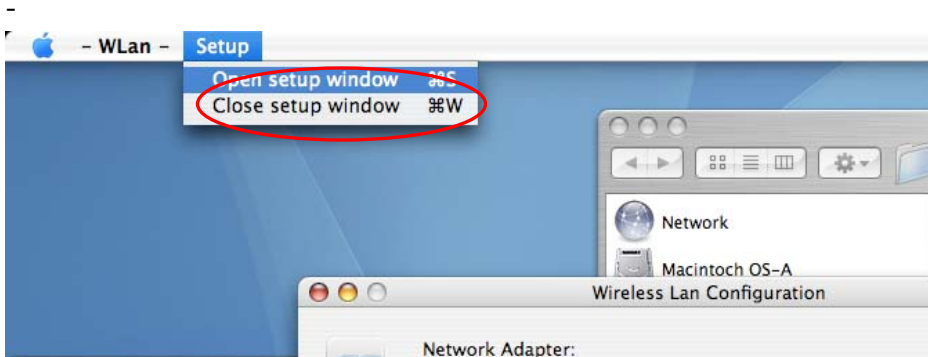
- When to run Wlan utility and find out Wlan utility to run.

After installation, the Wlan.app utility will be launched automatically at system startup. Anyway, you can also re-execute it from the following path (as the following figure) after you quit the utility or utility exit abnormally for some reasons.

Note: The Wlan.app application bundle located at directory of **/Applications/utilities/**.



- Open the setup window by clicking “Open setup window” subitem from the “Setup” top menu.

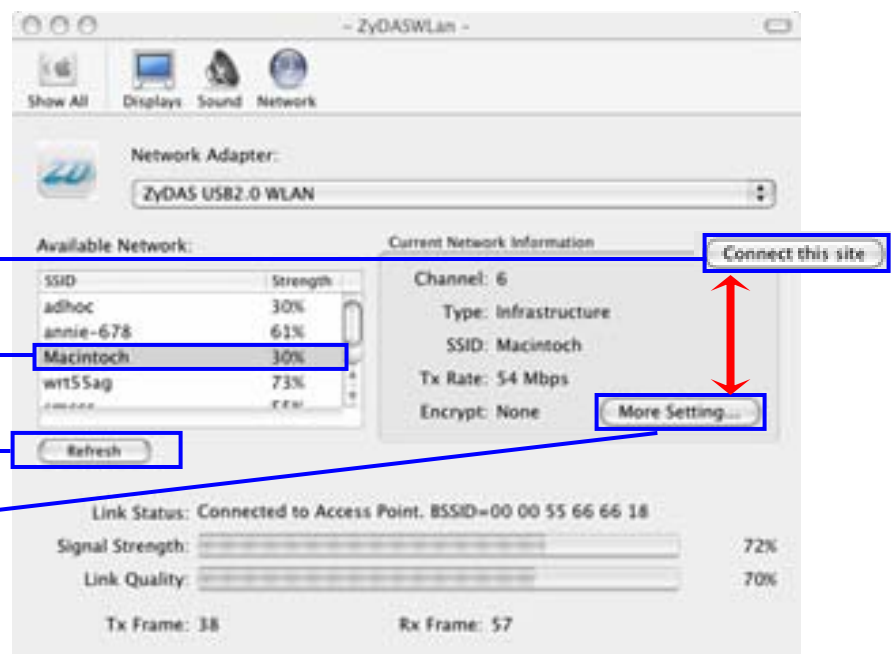


MainView

Double Click one SSID in Available Network or **Click Connect this site** : it would connect to the selected siteSSID.

Click Refresh: Site survey.

Click More Setting...: Open more setting panel



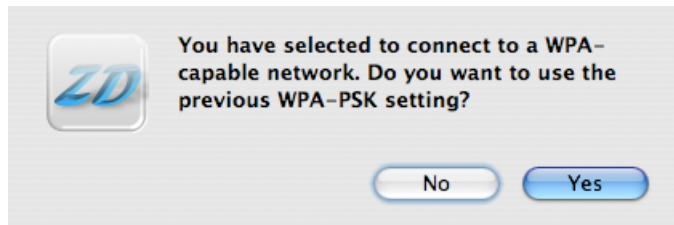
A request dialog would pop out if need Encryption in WEP.

“No” for configure new key setting, “Yes” for use previous setting.(As shown in the right figure)



A request dialog would pop out if WPA PSK is required.

Click “Yes” button to use current WPA pre-shared key, Click “No” to setup a new WPA pre-shared key. (As shown in the right figure)



General Connection Setting

WirelessMode: 2.4GHz(802.11b+g)
 Channel: 6
 SSID: wap54g
 Network Type: Infrastructure
 Encryption: TKIP
 Authentication Mode: WPA PSK

Encryption Setting

WEP Encryption Key Setting | WPA PSK Setting

Profile

Profile name: wap54g
 Load | Save | Delete

Other

For view information...
 Information | OK

More Setting

Allow user to modify the connection setting. The button face change to “Apply” after clicking the “Change” button.

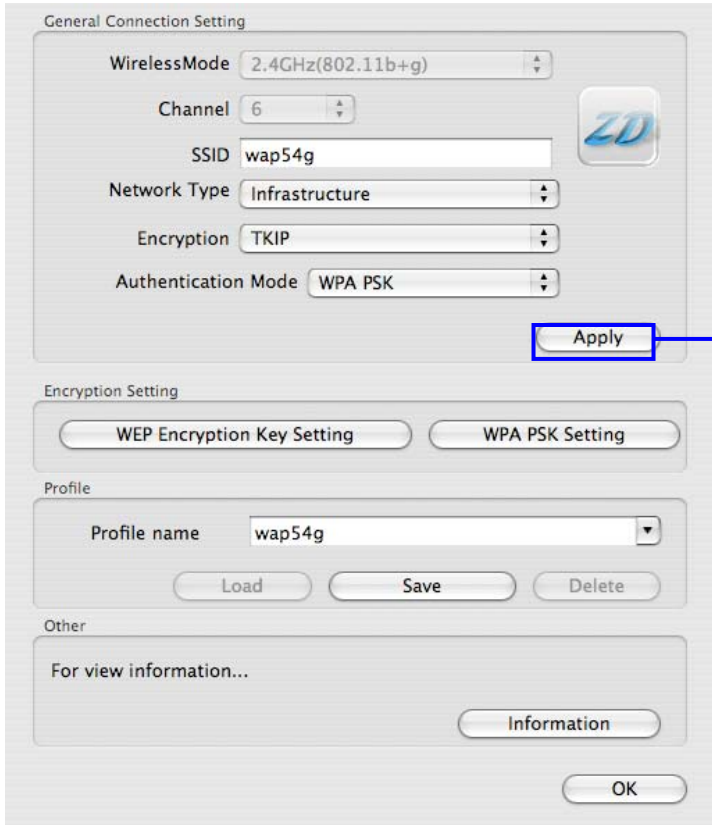
Edit WPA Pre-shared key.

Edit WEP static key

Profile management

View MAC address and version information.

Close the More Setting Panel



General Connection Setting

WirelessMode: 2.4GHz(802.11b+g)

Channel: 6

SSID: wap54g

Network Type: Infrastructure

Encryption: TKIP

Authentication Mode: WPA PSK

Apply

Encryption Setting

WEP Encryption Key Setting | WPA PSK Setting

Profile

Profile name: wap54g

Load | Save | Delete

Other


For view information...

Information

OK

Apply the new setting.

- Modifying the static WEP key.



WEP Key Setting

Key Length: ☒ 64 bit ☐ 128 bit ☐ 256 bit

Default Key ID: #1

Key Format: ☒ Hexadecimal ☐ ASCII

Key Value: #1:

#2:

#3:

#4:

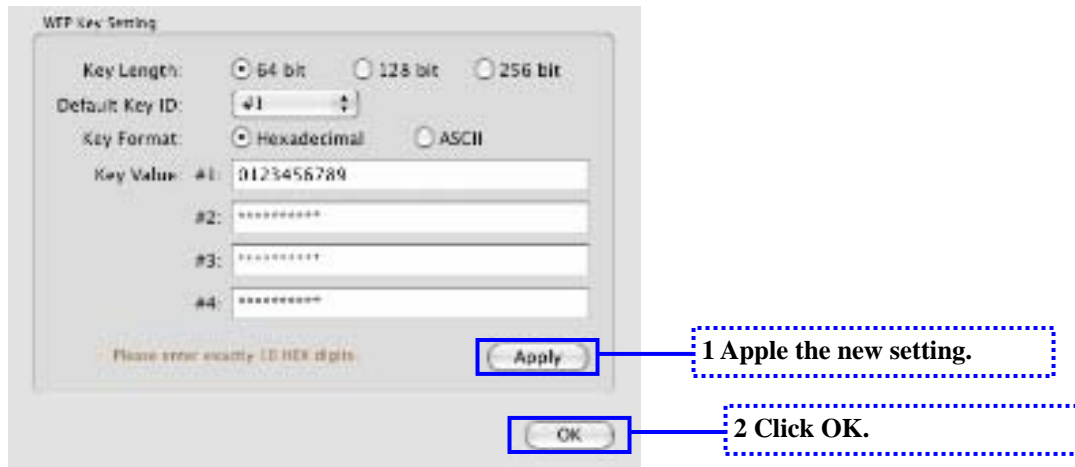
Please enter exactly 10 HEX digits.

Change

OK

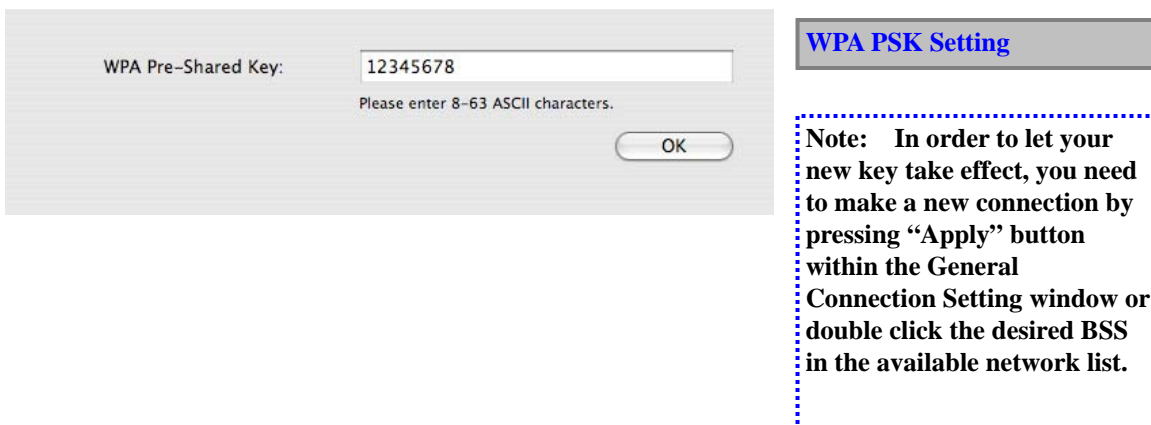
WEP Key Setting

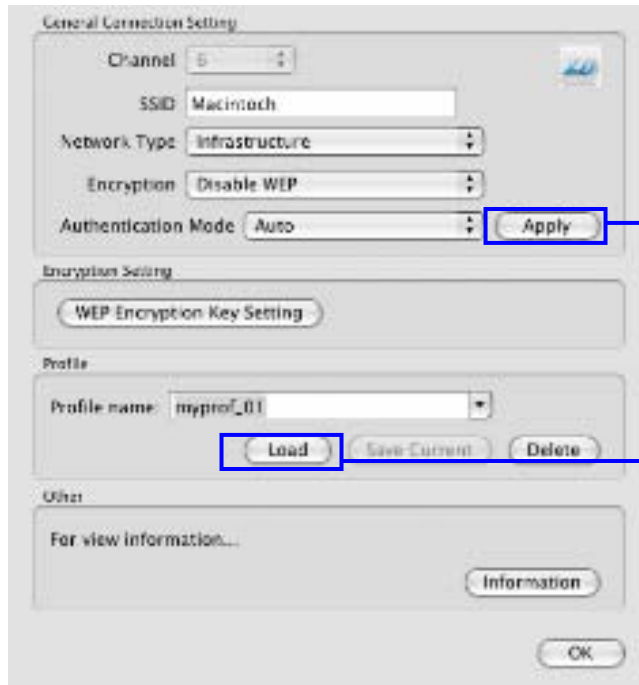
Note: If you open the “**Wep Key Setting**” along by click the button “**WEP Encryption Key Setting**” from More setting panel, you need to do re-connection by “apply” or double click the AP by the list of available network.



- Modifying static WPA PSK key.

- To enter WPA pre-shared key, you need click “WPA PSK setting” button within the General Connection Setting window. A WPA pre-shared key edit window shown as the following figure:
- Please press “OK” button to close the dialog when you finish editing of WPA PSK.



- Profile management:


General Connection Setting

Channel: 6

SSID: Macintosh

Network Type: Infrastructure

Encryption: Disable WEP

Authentication Mode: Auto

Apply

Encryption Setting

WEP Encryption Key Setting

Profile

Profile name: myprof_01

Load Save Current Delete

Other

For view information...

Information

OK

Profile

2 Click Apply to setting.

1 Load the selected profile.



SYSTEM INFORMATION

Driver Version: 1.3.0.0

Utility Version: 1.3.0.0

MAC Address: 00 a0 c5 d5 41 49

OK

Information



Network

Show All Display Sound Network

Location: Automatic

Show: Network Status

Ethernet Adapter (en0)

AirPort

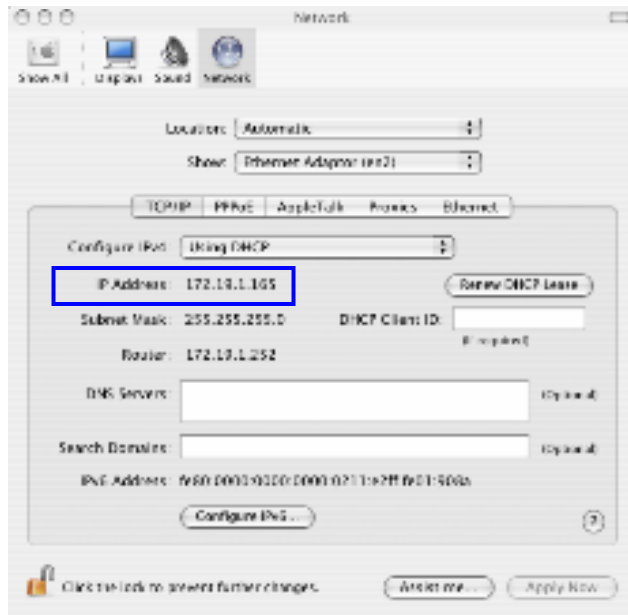
Internal Modem

Configure... Connect...

Click the lock to prevent further changes.

Remember Apply Now

Network setting



Check the TCP/IP setting for
your network.

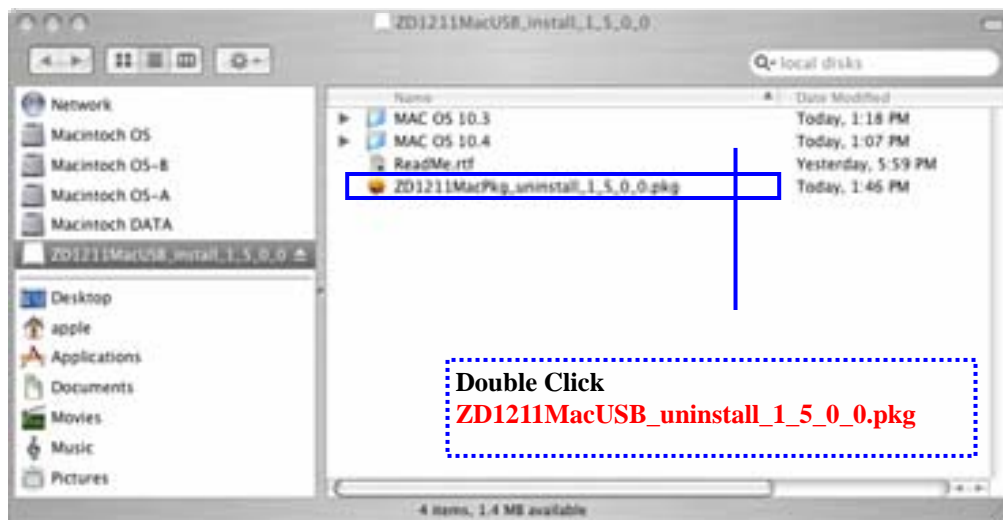
Some important note of WLAN operation while you are running an Intel-based machine:

1. If you have no other required-reasons, please avoid quitting WLAN utility (i.e. Close it).
2. For some critical reasons, you have to close WLAN utility and open it again, please do your best to remember to unplug the wireless network card before closing the WLAN utility. And insert your wireless card again after re-opening the WLAN utility.

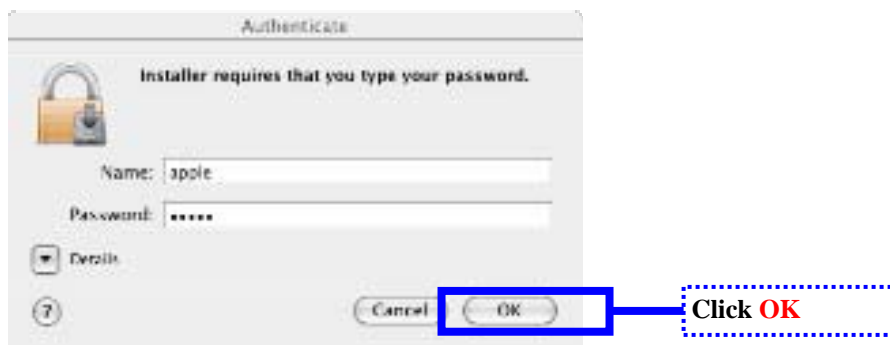
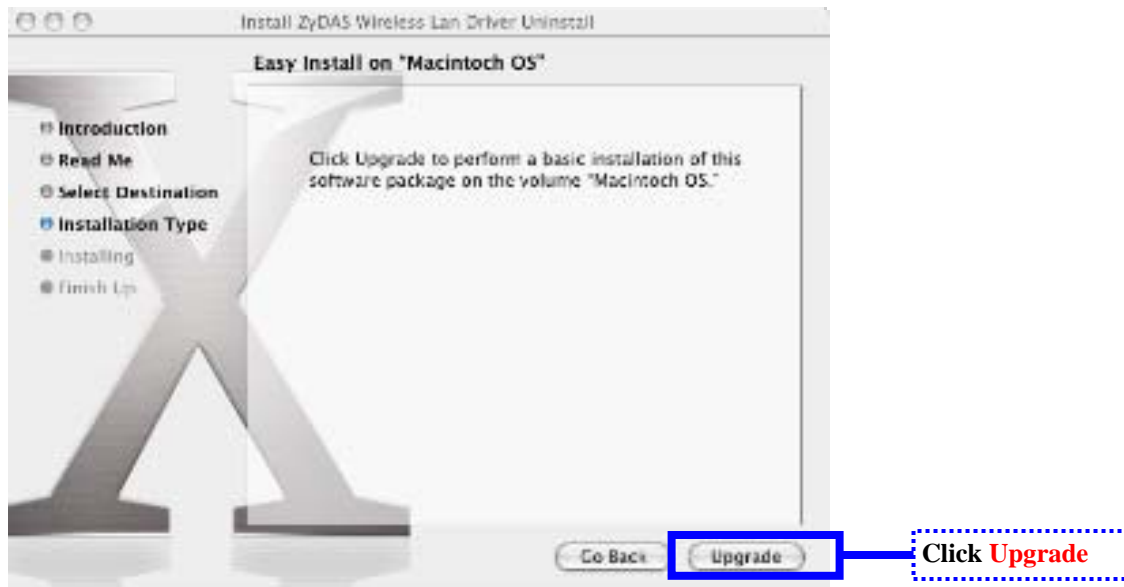
3. UnInstall ZD1211 driver and ZDWlan Utility

Note:

Before uninstalling the driver package, please remove the wireless card from Mac PC and quit WLAN utility.







Now uninstallation is Complete!